

Leo's
Workshop

A Future School by TNS Beaconhouse



Video Message from the Chief Executive

[click here for the video](#)



Video Message from the Project Director

[click here for the video](#)



Welcome from the Head Facilitator

It gives me great pleasure to welcome you to Leo's Workshop, your child's first step towards innovative teaching and learning. We are excited to take you on this journey of your child's discovery of his/her passion and purpose. As a Future School by TNS Beaconhouse, Leo's Workshop features next-generation, project-based learning, focused on interdisciplinary blended learning in multi-age classrooms with personalized instruction. Centred on real-world problems and solutions, we aim to engage children in learning that is deep and long-lasting. Guided by our experienced, trained facilitators, your child will set his/her own goals and be at the centre of the learning journey. Our students are encouraged to develop a balanced, diverse approach involving analysis and critical thinking to solve real-world problems, both individually as well as in teams, preparing them for the real world. We are excited to launch the first of its kind mentorship programme, Leo's Workshop Fellows, featuring renowned specialists, entrepreneurs and influencers.

Leo's Workshop is an innovative reinterpretation of the traditional school. Our vision is to make learning a journey of interest and pleasure for your child.

I look forward to the opportunity of meeting you to share our vision of the school of the future.

Best regards,
Wajiha Khan
Head Facilitator
Leo's Workshop

About the **Beaconhouse** Group

Founded in 1975, the Beaconhouse Group celebrates 45 years of excellence in education in November 2020. With over 315,000 full-time students in eight countries, Beaconhouse is dynamic and ever-evolving and offers innovative and progressive education with unprecedented diversity in age, socio-economic background, and nationality. The Beaconhouse Group has played a significant role in transforming education from traditional, didactic learning to student-centred, activity-based, and technology-enabled learning environments. Our global alumni exceed 105,000 in number and have made significant contributions in all fields within Pakistan and the international community.

The emphasis on quality education at Beaconhouse spans multiple pedagogies, curricula and assessment systems including Reggio Emilia, Project-Based Learning, Pakistan national curriculum & external examinations (and the national curricula and examination systems of UAE, Oman, Malaysia, Thailand, and the Philippines), Cambridge Assessment & International Education and the International Baccalaureate amongst others. This is enabled by our continuing emphasis on professional development (PD), curriculum development, school evaluation, and school improvement, which in turn are augmented by the latest information and communication technologies.



About **Leo's** Workshop

Leo's Workshop, a one of its kind microschool of Pakistan, enables children to be lifelong learners by encouraging them to analyse problems, imagine new solutions, and communicate respectfully. We provide a novel, informed approach for your child by personalising teaching and learning for their needs. This future school by TNS Beaconhouse is authentically child-led and invariably breeds confidence and leadership qualities. Open-space classrooms and mixed-age level grouping encourages learning from each other, supported with advanced, technological resources. Multidisciplinary learning enhances curiosity and imagination centred on real-world problem-solving.

We at Leo's Workshop seek inspiration by the ingenuity and inventive imaginations of great polymaths such as Leonardo da Vinci to form our world-view. Children are not placed into standardised cohorts; our educational philosophy and practice enable children to individually co-construct progression with our learning facilitators.





Vision

Leo's Workshop will enable and empower a community of self-directed learners who are compassionate, innovative and independent thinkers that will help shape their generation's role in the future of society.



Mission

Leo's Workshop will achieve this by providing an inclusive and caring environment where young people have individual agency and resources to explore their natural curiosity and extend their inquiry about the world they live in. Our multi-grade, experiential learning environment will set the pace for individualized teaching and learning that fosters lifelong learners who are well-equipped to thrive in an unknown future.

Core Values



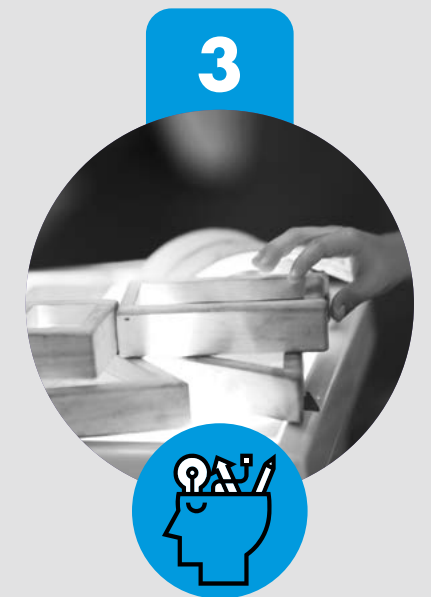
Innovation

In a diverse world, the ability to rethink challenges from multiple perspectives



Respect

For all opinions, individuals and the planet



Curiosity

An innate desire to acquire knowledge, to explore our cultural identity and inquire about the world around us

What Makes us **Different?**

We believe that every child is unique and deserves to embark on a learning quest of their own. As a one of a kind school, we give our facilitators the freedom to adapt to the learning style of each child and respond with tailored lessons to accomplish individual learning milestones. The primary objective of this future school by TNS Beaconhouse is to help these young minds explore their abilities and challenge themselves in a way they enjoy.

The project-based learning method used by Leo's Workshop fosters an eagerness to learn and instils the four C's which are critical thinking, creativity, collaboration and communication. Projects stimulate creative thinking, cooperative learning, and drive their interests in academics. Children are encouraged to learn by critical thinking, problem-solving, teamwork, research skills, risk-taking, creativity, and entrepreneurship.



Our Philosophy

Our philosophy of learning is based upon 'truths' that enable the child to learn effectively. These guiding principles are as follows:



Multidisciplinary, Project-based Learning

Children, from a young age, experience how to integrate learnings in their projects from multiple disciplines to understand and resolve complex real-world issues. Students engage with renowned professionals in the mentorship of projects.



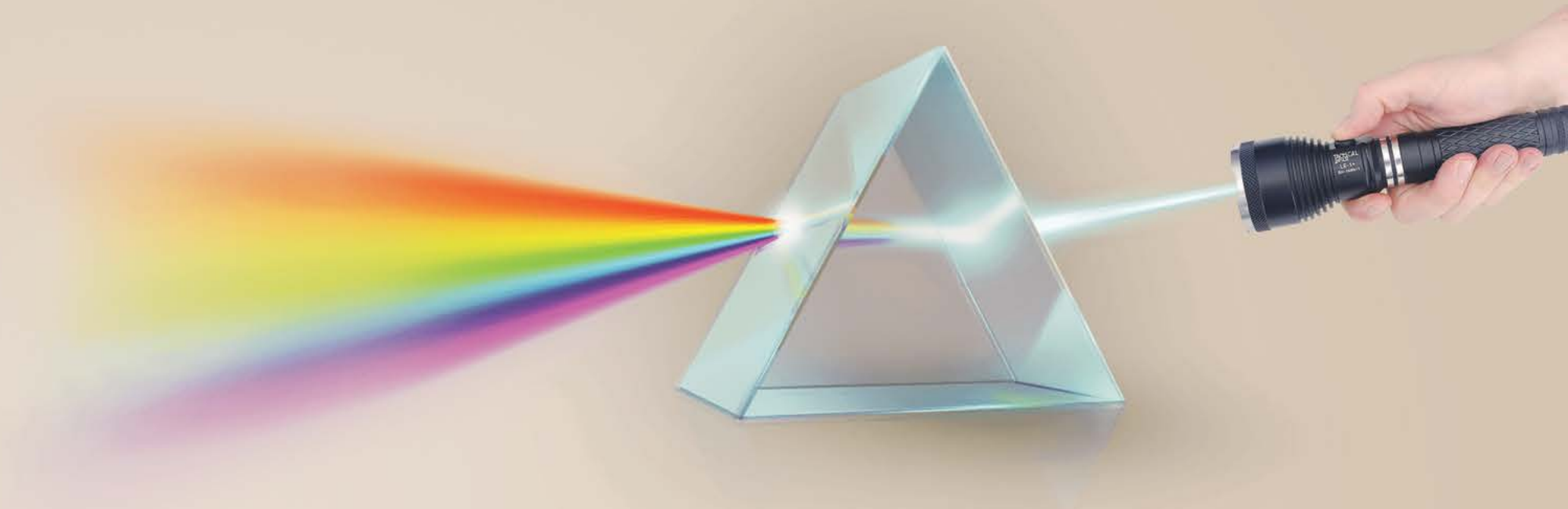
Children Discover their Passion and Purpose

Our child-led, transformative learning process facilitates your child's journey of discovery, a key first step in becoming a successful life-long learner.



Child-led, Self-paced Learning

Students establish their own learning goals with our learning facilitators.



Try-Fail-Learn-REPEAT

We provide a secure, positive environment for children to try, fail and try again in their transformative learning journey. We keep faith in the child's ability to triumph ultimately.



Children Will Create an Unimagined Future

We value the importance of inculcating leadership qualities. At Leo's Workshop, we facilitate your child's ability to inspire others by effectively communicating ideas and develop decision-making skills.

Our Approach to Learning

The learning trajectory that we adopt shapes young formative minds by enriching visual, auditory, reading/writing, and kinesthetic skills. We allow the children to be – walk into Leo's Workshop, and you see children sitting at tables or sitting knee-to-knee in small groups. They won't be quiet, all eyes won't be on the teacher, but they are being educated unconventionally. The chatter is rigorous, and the ideas free-flowing. They are facilitating their learning at their own individual pace as per their own capacity.



Learning Methodology

Project Based Learning (PBL) is a pedagogical approach which develops skills and knowledge by facilitating inquiry into real-world challenges for an extended period of time. The children are encouraged to research and collaborate on authentic and engaging projects that are contextual and solution-oriented. Leo's Workshop has facilitators who promote self-learning and retain knowledge that leads to self-actualisation. The PBL approach at Leo's Workshop is designed to nurture in your child an avid interest in life-long learning, social awareness, empathy, critical thinking and decision making.

To help ensure children are engaging in quality Project Based Learning, Leo's Workshop has built its learning methodology on the research-based model that PBL recommends for "Gold Standard PBL".



Our Studios

We are creating a school of tomorrow with open, collaborative spaces that inspire the students to extend their inquiry and dig deeper. Our studios act as the ideal space for the artist, innovator, thinker, inquirer, scientist and even the philosopher in every growing child. They complement the learning approach with maximised participation and inclusion, improving self-esteem and motivation of all children. Additionally, they create a platform for interdisciplinary teaching and learning by integrating mathematics with music, science with art, economics and entrepreneurship to prepare them for the future.

Maker's Studio features 3D printers, laser cutters, carpentry stations, robotics, AI, coding equipment et cetera invigorating our steam programme and providing students with the skills they need to thrive in their future careers, from technical skills to critical thinking, problem-solving, creativity, communication and collaboration.

Nūr is the media centre of the school, it provides for a unique technology-driven curriculum rarely found in a K-5 school. the media centre offers students and faculty a variety of state-of-the-art digital resources, including video,

music, photography, graphic design and Web design capabilities, which they can integrate into educational projects and curriculum.

Nusrat is our music studio, which provides a progressive spiral of learning with all the interactive resources a child may need. Children sing, play, improvise, compose, perform and mix.

Food for Thought is our fully functional café that is operated by the children for the children. This is where the children learn about nutrition, food and agriculture, and the world cuisines.



Early Years

All children are natural inquirers; during the early years, they are curious about the world around them and that curiosity must be nurtured; they need more challenge and extensions on skills that will help guide that inquiry. Our Early Years Level aims to holistically develop a child's social, emotional, cognitive and physical needs to build a solid and broad foundation for lifelong learning and wellbeing. This level includes Nursery, Reception, and Kindergarten and is called the 'INQUIRERS.' Inspired by the Reggio Emilia philosophy, we use Project Based Learning (PBL) as its approach to teaching and learning. Children are continually 'followed' to see where their interests lie, their journey is documented and a trained facilitator uses these documents to create meaningful learning opportunities.



Lower Primary

Building on the knowledge acquired in the inquiry stage, at the core of our Lower Primary is a commitment to developing children's social and emotional skills while continuing to create an inquiring and critical mind. This level includes Years 1 and 2, and are called the 'BUILDERS'. Children learn how to interact with kindness and empathy with others in a shared multi-aged space. This unique setting allows the children to explore beyond what they are 'supposed' to learn and encourages them to extend their abilities and build their own unique perspectives. Because children are not bound by books of only their grade level, they have opportunities to excel in areas of their particular interest. We strongly believe each child has the potential to excel and it is the facilitator's job to help the student reach that potential.

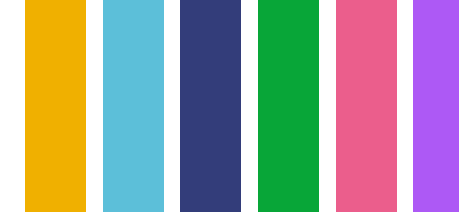


Upper Primary

Children as Thinkers is the most important skill in fostering the development that enables children to be engaged and create dispositions such as curiosity, persistence, flexibility, reflectiveness, and a collaborative outlook to problem-solving. By upper primary, children will be trained to make critical decisions, have a voice and choice in their learning and be able to communicate these choices and decisions in a logical and cohesive manner. This level includes Years 3, 4 and 5 and it is called the 'THINKERS'. Our aim is to scaffold the child's mind in such a way that they have a natural thirst for acquiring knowledge and more importantly an ability to apply knowledge. Children are encouraged to become globally aware, culturally sensitive, and open-minded citizens who celebrate the fact that they attend a school with a diversity of cultures and beliefs. They are also encouraged to become balanced individuals with a wide range of sporting, artistic, academic, and cultural interests. There are multiple opportunities for each child to express their individuality academically and non academically



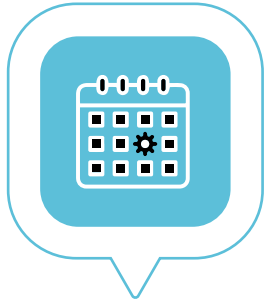
The Admission Process



Connect with us

We welcome you to explore the magic that happens at Leo's Workshop and how we engage a child with experiential learning.

01



Schedule a tour

You can schedule an enriching tour of the school, and even observe a class to understand the learning methodology. Your child will have a chance to spend time in a classroom, as well, while you participate in an interview with the Head facilitator.

02



Submit admissions form

Submit your completed form to our office with a non-refundable application fee of Rs.4500. If your child is currently enrolled at another school, we require all prior academic records of your child.

03



Schedule a baseline assessment

For children between the ages of 3-5 years, this is an hour-long informal meeting with the child's facilitator, this will help us gauge the child's interests and social skills so we can design a customised learning plan for your child.

For children between the ages of 6-11 years, we assess the child on numeracy, literacy and social sciences. It can last up to two hours. This ensures we place the child appropriately and create a customised learning plan for your child.

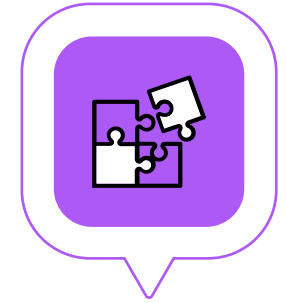
04



Parent and Child orientation

Once your child has been granted admission, we require parents to attend our orientation class. This familiarises you with the school's philosophy, approach, handbook of policies and the personalised education plan.

05



Learning begins!

We are excited to have you on board for a mutually joyous journey.

06

We Hope To Hear From You Soon.

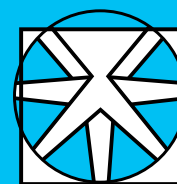
Thank you for your interest in Leo's Workshop. For questions about our school model or the admissions process, please feel free to contact us at:

☎ 0303-829-0000

✉ leosworkshop@bh.edu.pk

🌐 www.leosworkshop.net

📍 28-G, Block E-1, Gulberg III, Lahore



Leo's Workshop

A Future School by TNS Beaconhouse

Follow Leo's Workshop on

