

Leo's  
Workshop

A Future School by TNS Beaconhouse



## Video Message from the Chief Executive

[click here for the video](#)



## Video Message from the Project Director

[click here for the video](#)



# Welcome from the Head Facilitator

I believe every child deserves the space to explore their creativity and become a changemaker. As the head facilitator, I am eager to share with you the essence of what makes our school a beacon of creativity, exploration, and innovation.

At Leo's Workshop, we draw inspiration from the Reggio Emilia philosophy, where there is less emphasis on direction and more on exploration. We believe in cultivating an environment where curiosity is nurtured, and learning is a dynamic, hands-on experience. It's a place where every child is not just encouraged but empowered to thrive.

Central to our philosophy is the use of Project-based Learning (PBL), a method that empowers students to look beyond the confines of the classroom and engage with the world around them. Through PBL, students are encouraged to identify real-world problems, collaborate with their peers, and devise innovative solutions that have a tangible impact. This approach transcends the boundaries of traditional education, empowering our students to become changemakers whose influence extends far beyond the walls of our school.

We believe in nurturing not just intellect but also empathy, creativity, and resilience. Our dedicated team of facilitators is committed to providing personalized support and guidance to each child, ensuring that they feel valued, challenged, and empowered to reach their full potential.

I invite you to join us on this exciting journey of discovery and transformation at Leo's Workshop, where the possibilities are endless, and every child is celebrated for their unique gifts and talents.

Warm regards,  
Sumaiya Zohaib  
Head Facilitator  
Leo's Workshop

# About Beaconhouse

Founded in 1975, the Beaconhouse Group celebrates 45 years of excellence in education in November 2020. With over 315,000 full-time students in eight countries, Dynamic and constantly evolving, Beaconhouse schools provide innovative and progressive education to over 360,000 students worldwide with an unprecedented diversity in age, socio-economic background and nationality. Our alumni have found great success across diverse fields including education, medicine, politics, business, civil service, the arts, fashion, sports, and beyond.

The emphasis on quality education at Beaconhouse spans multiple pedagogies, curricula and assessment systems including Reggio Emilia, Project-Based Learning, Pakistan national curriculum & external examinations (and the national curricula and examination systems of UAE, Oman, Malaysia, Thailand, and the Philippines), Cambridge Assessment & International Education and the International Baccalaureate amongst others. This is enabled by our continuing emphasis on professional development (PD), curriculum development, school evaluation, and school improvement, which in turn are augmented by the latest information and communication technologies.





# About Leo's Workshop

Leo's Workshop, a one of its kind micro school of Pakistan, enables children to be lifelong learners by encouraging them to analyze problems, imagine new solutions, and communicate respectfully. We provide a novel, informed approach for your children by personalizing teaching and learning for their needs. This future school by TNS Beaconhouse is authentically child-led and invariably fosters confidence and leadership qualities. Open-space classrooms and mixed-age grouping encourages learning from each other, supported with advanced, technological resources. Multidisciplinary learning enhances curiosity and imagination, focusing on solving real-world problems.

At Leo's Workshop, we draw inspiration from the ingenuity and inventive imagination of great polymaths like Leonardo da Vinci to shape our worldview. Children are not placed into standardised cohorts; our educational philosophy and practice enable children to individually co-construct progression with our learning facilitators.





## Vision

Leo's Workshop will enable and empower a community of self-directed learners who are compassionate, innovative and independent thinkers that will help shape their generation's role in the future of society.



## Mission

Leo's Workshop will achieve this by providing an inclusive and caring environment where young people have individual agency and resources to explore their natural curiosity and extend their inquiry about the world they live in. Our multi-grade, experiential learning environment will set the pace for individualized teaching and learning that fosters lifelong learners who are well-equipped to thrive in an unknown future.

## Core Values



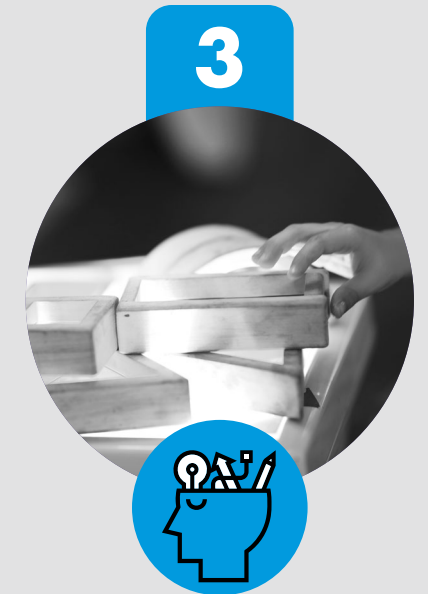
### Innovation

In a diverse world, the ability to rethink challenges from multiple perspectives



### Respect

For all opinions, individuals and the planet



### Curiosity

An innate desire to acquire knowledge, to explore our cultural identity and inquire about the world around us



# What Makes us Different?

We believe that every child is unique and deserves to embark on a learning quest of their own. As a one-of-a-kind school, we give our facilitators the freedom to adapt to the learning style of each child and respond with tailored lessons to accomplish individual learning milestones. Our primary objective is to help these young minds explore their abilities and challenge themselves in a way they enjoy.

The project-based learning approach at Leo's Workshop fosters an eagerness to learn and instills the four Cs which are critical thinking, creativity, collaboration and communication. Projects stimulate creative thinking and cooperative learning, driving students' interests in academics. Children are encouraged to learn, problem-solving, teamwork, research skills, risk-taking, and entrepreneurship.





# Our Philosophy

**Our philosophy of learning is based upon 'truths' that enable the child to learn effectively. These guiding principles are as follows:**



## Multidisciplinary Project-based Learning

From a young age, children experience how to integrate learnings in their projects from multiple disciplines to understand and resolve complex real-world issues. Students engage with renowned professionals in the mentorship of projects.



## Children Discover their Passion and Purpose

Our child-led, transformative learning process facilitates your child's journey of discovery, a key first step in becoming a successful life-long learner.



## Child-led Self-paced Learning

Students establish their own learning goals with our learning facilitators.



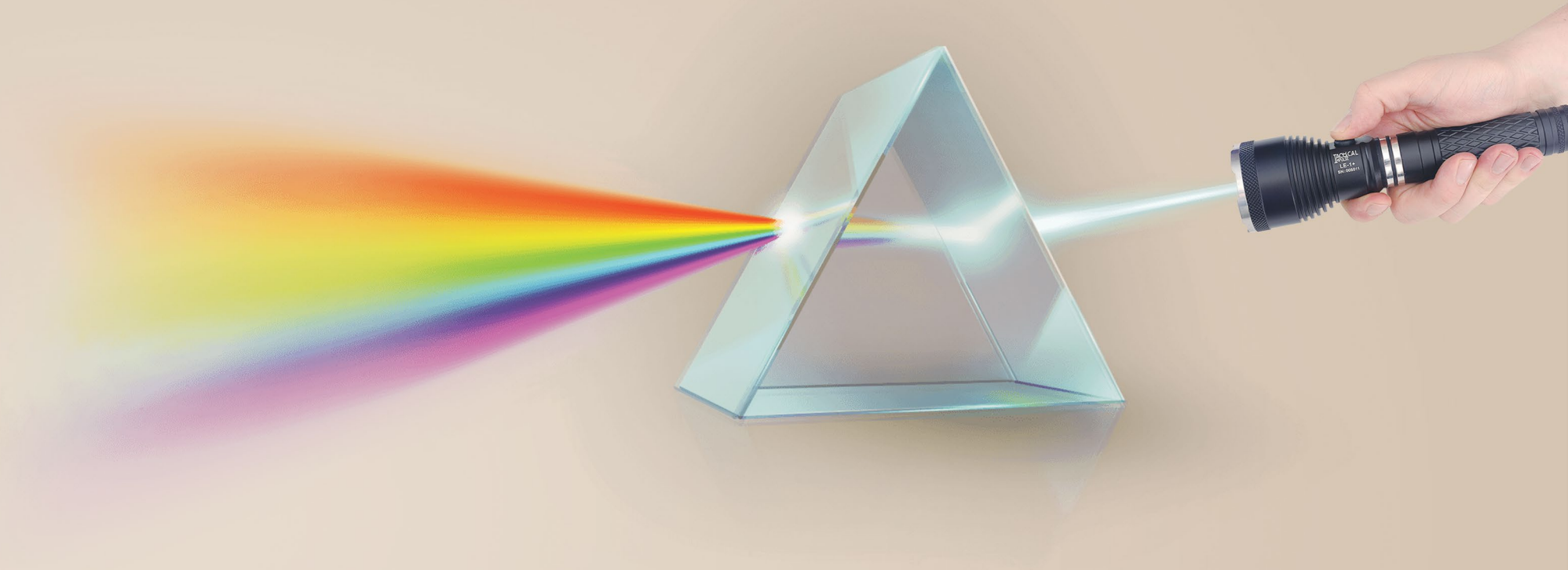
## Try-Fail-Learn-Repeat

We provide a secure, positive environment for children to try, fail and try again in their transformative learning journey. We keep faith in the child's ability to triumph ultimately.



## Children Will Create an Unimagined Future

We value the importance of inculcating leadership qualities. At Leo's Workshop, we facilitate your child's ability to inspire others by effectively communicating ideas and developing decision-making skills.



# Our Approach to Learning

The learning trajectory that we adopt shapes young formative minds by enriching visual, auditory, reading/writing, and kinesthetic skills. At Leo's Workshop, we let children simply be themselves. Walk in, and you'll find children sitting at tables or knee-to-knee in small groups engaged in lively chatter and exchanging free flowing ideas. They are facilitating their learning at their own individual pace as per their own capacity.





# Learning Methodology

Project-based Learning (PBL) is a pedagogical approach which develops skills and knowledge by facilitating inquiry into real-world challenges for an extended period of time. Children are encouraged to research and collaborate on authentic and engaging projects that are contextual and solution-oriented. Leo's Workshop has facilitators who promote self-learning and retain knowledge that leads to self-actualization. The PBL approach at Leo's Workshop is designed to nurture social awareness, empathy, critical thinking, decision making and an avid interest in lifelong learning.

To ensure that children engage in quality Project-based Learning, Leo's Workshop has built its learning methodology on the research-based model that PBL recommends for "Gold Standard PBL".





# Our Studios

We are creating a school of tomorrow with open, collaborative spaces that inspire students to extend their inquiry and dig deeper. Our studios act as the ideal space for the artist, innovator, thinker, inquirer, scientist and even the philosopher in every growing child. They complement the learning approach with maximized participation and inclusion, improving self-esteem and motivation of children. Additionally, they create a platform for interdisciplinary teaching and learning by integrating mathematics with music, science with art, economics and entrepreneurship to prepare students for the future.

**Maker's Studio** features 3D printers, laser cutters, carpentry stations, robotics, AI, coding equipment et cetera invigorating our STEAM program and providing students with the skills they need to thrive in their future careers, from technical skills to critical thinking, problem-solving, creativity, communication and collaboration.

**Nūr** is the media center of the school, it provides for a unique technology-driven curriculum rarely found in a K-5 school. The media center offers students and faculty a variety of state-of-the-art digital resources, including video,

music, photography, graphic design and web design capabilities, which they can integrate into educational projects and curriculum.

**Nusrat** is our music studio, which offers a progressive spiral of learning, equipped with all the interactive resources a child may need.

**Food for Thought** is our fully functional café that is operated by the children for the children. Here, they learn about nutrition, food and agriculture, and world cuisines.



CLIP SHOT





# Early Years

All children are natural inquirers; during the early years, they are curious about the world around them, and this curiosity must be nurtured. They need more challenging experiences and further development of skills that will help guide their inquiry.

Our Early Years program, 'Inquirers', holistically develops a child's social, emotional, cognitive and physical needs to build a solid and broad foundation for lifelong learning and wellbeing. This level includes Nursery, Reception, and Kindergarten. Children's interests are monitored, and their journeys are documented. A trained facilitator then uses these documents to create meaningful learning opportunities.





# Lower Primary

Building on the knowledge acquired in the inquiry stage, at the core of our Lower Primary program is a commitment to developing children's social and emotional skills while continuing to create an inquiring and critical mind. This level, called 'Builders', includes Years 1 and 2 where children learn how to interact with kindness and empathy with others in a shared multi-aged space. This unique setting allows children to explore beyond what they are 'supposed' to learn and encourages them to extend their abilities and build their own unique perspectives. Because children are not bound by books of only their grade level, they have opportunities to excel in areas of their particular interest. We strongly believe each child has the potential to excel and that it is the facilitator's job to help the student reach that potential.





# Upper Primary

Critical thinking is the most important skill for fostering development that engages children and cultivates dispositions such as curiosity, persistence, flexibility, reflectiveness, and a collaborative approach to problem-solving.

The Upper Primary level, ‘Thinkers’, includes Years 3, 4 and 5. By this stage children are well-trained to make critical decisions, have a voice and choice in their learning and be able to communicate these choices and decisions in a logical and cohesive manner.

Our aim is to scaffold the child’s mind in such a way that they have a natural drive for acquiring knowledge and, more importantly, the ability to apply knowledge. Children are encouraged to become globally aware, culturally sensitive, and open-minded citizens who celebrate the diversity of cultures and beliefs. They are also encouraged to become balanced individuals with a wide range of sporting, artistic, academic, and cultural interests. There are multiple opportunities for each child to express their individuality, both academically and through extracurricular activities



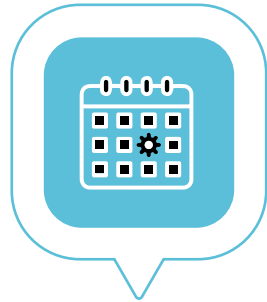
# The Admission Process



## Connect with us

We welcome you to explore the magic that happens at Leo's Workshop and discover how we engage a child with experiential learning.

01



## Schedule a tour

You can schedule an enriching tour of the school and even observe a class to better understand the learning methodology. Additionally, your child will have the opportunity to spend time in a classroom, while you meet with the Head Facilitator.

02



## Submit the Admissions Form

Submit your completed form to our office with a non-refundable application fee of Rs 5500. If your child is currently enrolled at another school, we require all prior academic records.

03



## Schedule a Baseline Assessment

For children between the ages of 3-5 years, this is an hour-long informal meeting with the child's facilitator, this will help us gauge the child's interests and social skills so we can design a customized learning plan for your child.

For children between the ages of 6-11 years, we assess the child on numeracy, literacy and social sciences. The assessment can last up to two hours. This helps us create a customized learning plan and ensures that we place the child appropriately.

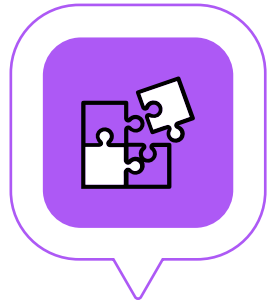
04



## Parent and Child Orientation

Once your child has been granted admission, we require parents to attend our orientation class. This familiarizes you with the school's philosophy, approach, handbook of policies and the personalized education plan.

05



## Learning Begins!

We are excited to have you on board for a mutually joyous journey.

06



## We Hope To Hear From You Soon.

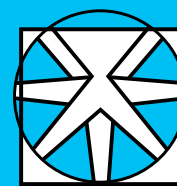
Thank you for your interest in Leo's Workshop. For questions about our school model or the admissions process, do not hesitate to contact us.

☎ 042-35873482-3

✉ [info@leosworkshop.net](mailto:info@leosworkshop.net)

🌐 [www.leosworkshop.net](http://www.leosworkshop.net)

📍 28-G, Block E-1, Gulberg III, Lahore



# Leo's Workshop

A Future School by TNS Beaconhouse

---

Follow Leo's Workshop on

